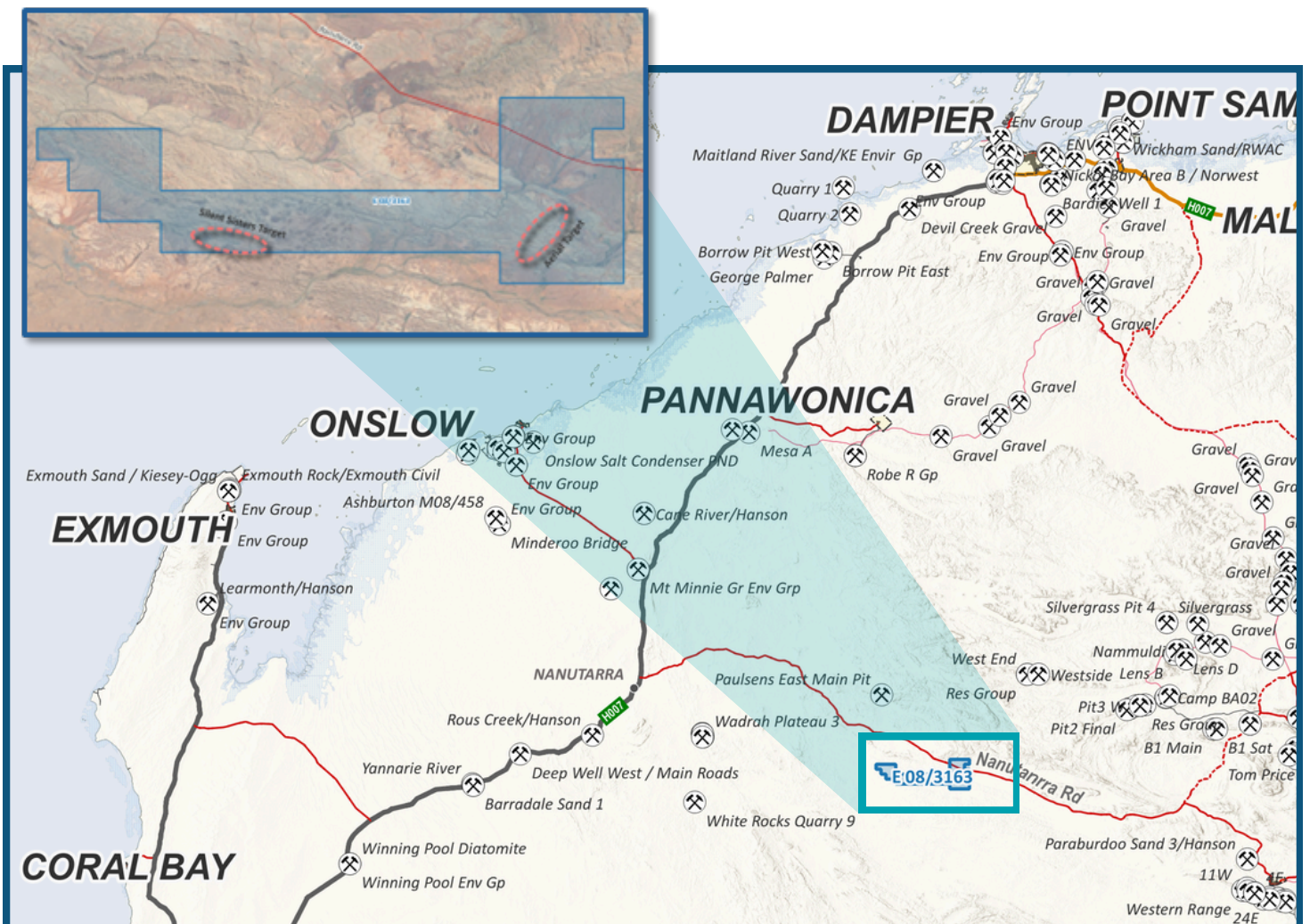


Deep8Mining

THE WYLOO PROJECT JOINT VENTURE OPPORTUNITY WESTERN AUSTRALIA

- ✓ Deep 8 Mining Pty Ltd is seeking a **Joint Venture Partner** in relation to the **Wyloo Gold & Base Metals Project (E08/3136)** located along the highly prospective Nanjilgardy Fault complex, nestled between two significant gold mines, Paulsens and Mt Olympus.
- ✓ E08/3136 spans an extensive area of approximately **400km²** (9 Blocks) over the southern flanks of the Wyloo Dome, hosting historic silver-lead mines and surface anomalies for **gold, silver, zinc, and copper**.
- ✓ Magnetic anomalies and significant geological formations, such as the Duck Creek and Ashburton formations, indicate an excellent environment for migrating mineralising fluids.
- ✓ With limited historical drilling conducted in the region, there is potential for discovering large, deep-seated gold deposits. The geological indicators suggest a shared “plumbing system” for gold and base metals akin to the renowned Paulsens deposit, making this project an exciting investment opportunity with high prospectivity.



EXPRESS YOUR INTEREST & FIND OUT MORE
amets.com.au/advertising | info@amets.com.au