

**SALE
OPPORTUNITY**



CRITICAL MINERALS PROJECT

NEW SOUTH WALES

AMETS
TENEMENTS & GEOSERVICES

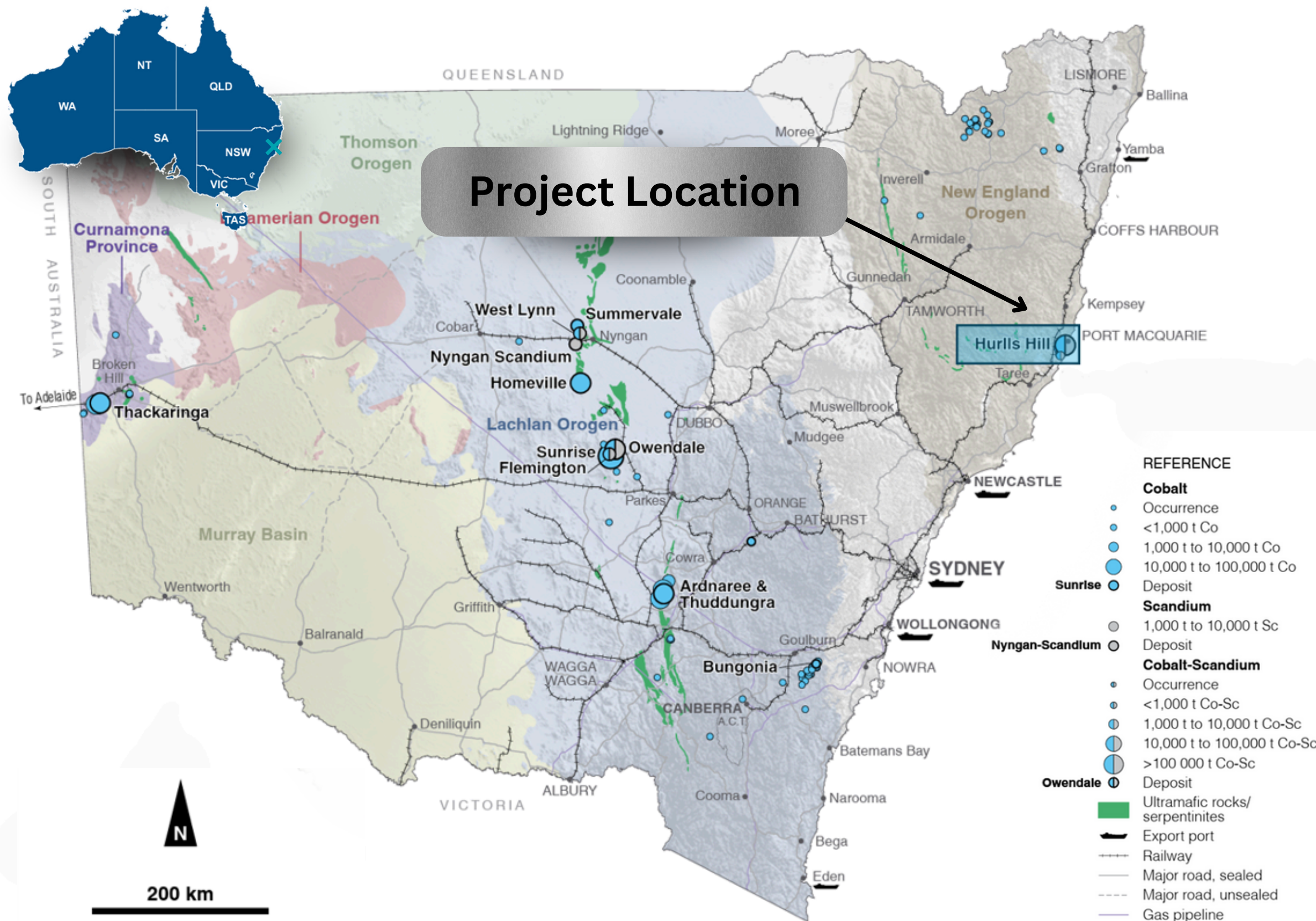
OVERVIEW

- This exceptional **Critical Minerals Project** comprised of **EL9666**, is 100% owned by TerraCobalt Pty Ltd.
- EL9666 covers an area of **73 Units** and **expires on 25 June 2030**.
- The Project is **strategically located** South-West of Port Macquarie, NSW, well supported by existing infrastructure.
- Significant potential, with large, shallow **Nickel, Cobalt and Scandium** prospects.



CRITICAL MINERALS PROJECT

TerraCobalt



EL9666

Prime Asset Location

Situated in a region with significant nickel and cobalt deposits.

Favourable Infrastructure

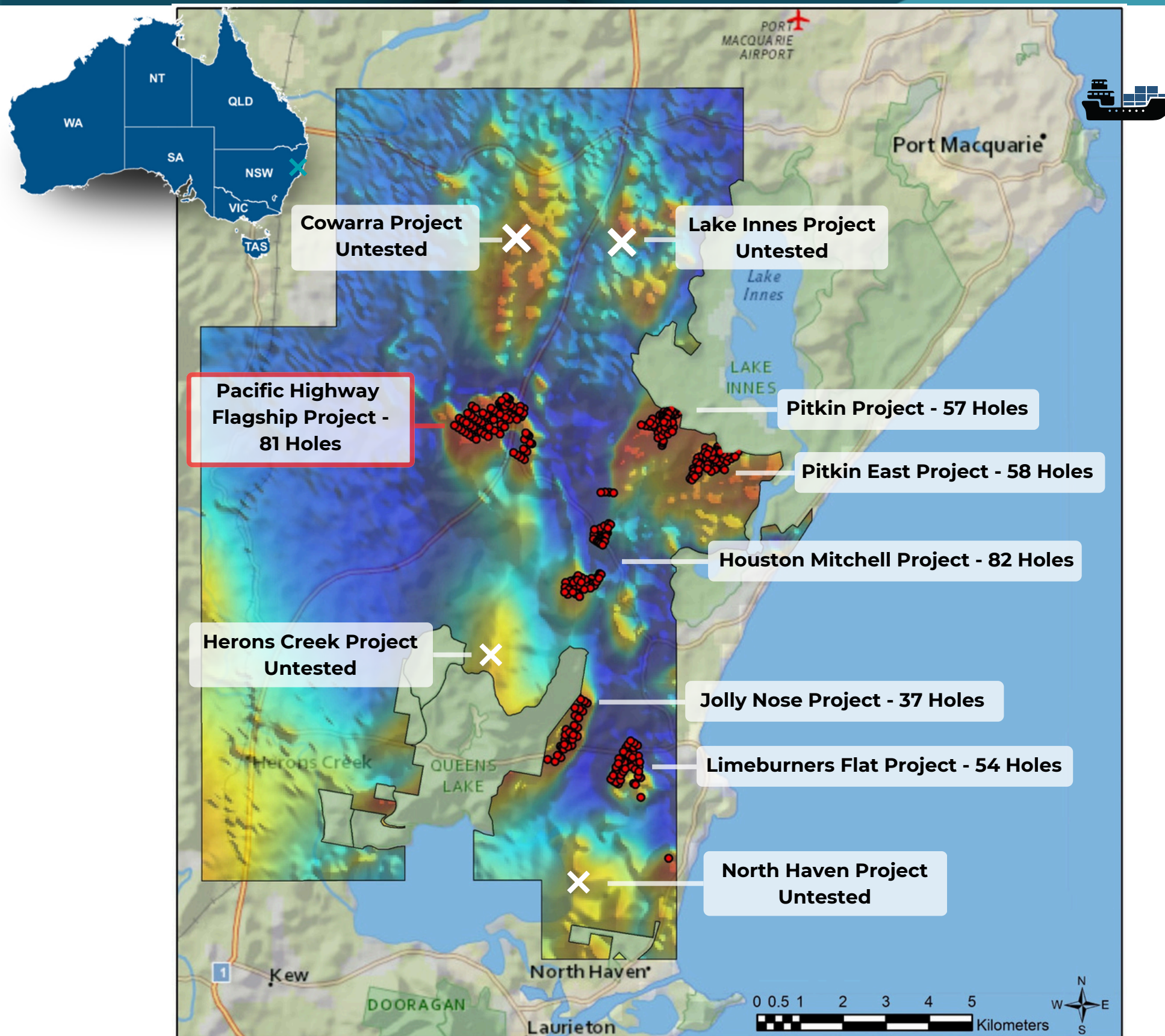
The Project is central to rail, road, natural/renewable energy sources and export facilities in Newcastle, Sydney and Wollongong.

High Value Commodities

Critical to energy transition and key 'tech metals'.

CRITICAL MINERALS PROJECT

TerraCobalt



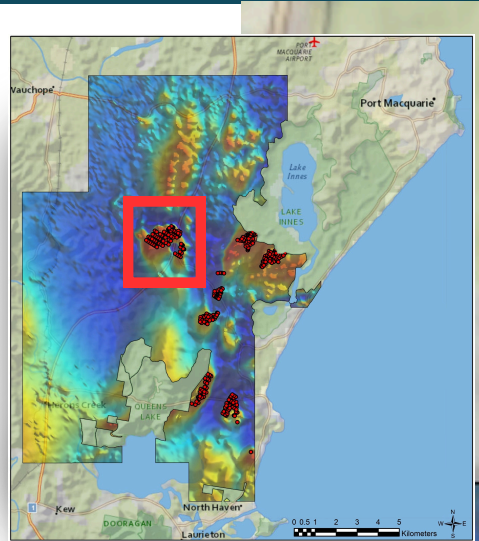
EL9666

- **Significant mineralisation** throughout EL9666 attributed to **Ni-Co-Sc** lateritic deposits.
- **Over 360 holes and assays** have successfully intersected rich Ni-Co-Sc grades.
- **Additional untested on-strike mag-anomolies** adding further potential for extension.
- **Drill results available on request** within Information Memorandum for Project Prospects.

CRITICAL MINERALS PROJECT

TerraCobalt

Pacific Highway Flagship Project



Pacific Highway Flagship Project

- The Pacific Highway Flagship Project is well-constrained and is positioned to advance to a **Preliminary Feasibility Study**, mapping the path to production.
- **Mineral Resource of 1.52Mt @ 0.07% Co, 0.83% Ni and 39.5ppm Sc, reported.**
- Confirmed **high grade Cobalt** intersections of up to **6000ppm**

Unlock the Potential!

Invest in one of Australia's Premier Critical Minerals Projects

Information Memorandum and Data Room Access available on request

FIND OUT MORE

www.amets.com.au/advertising

OR

info@amets.com.au

**SALE
OPPORTUNITY**



CRITICAL MINERALS PROJECT

NEW SOUTH WALES

AMETS
TENEMENTS & GEOSERVICES