

SALE  
OPPORTUNITY



BROULA MINE

NEW SOUTH WALES

**AMETS**  
TENEMENTS & GEOSERVICES

## OVERVIEW

- 100% owned **magnetite** and **limestone** mine operating under **ML1616** located ~20kms southwest of Cowra, NSW.
- Strategically located within NSW's resource corridor, with access to key coal basins and infrastructure.
- Dual commodity opportunity with high-purity DMS **magnetite** and DSO iron ore, as well as **limestone** product.



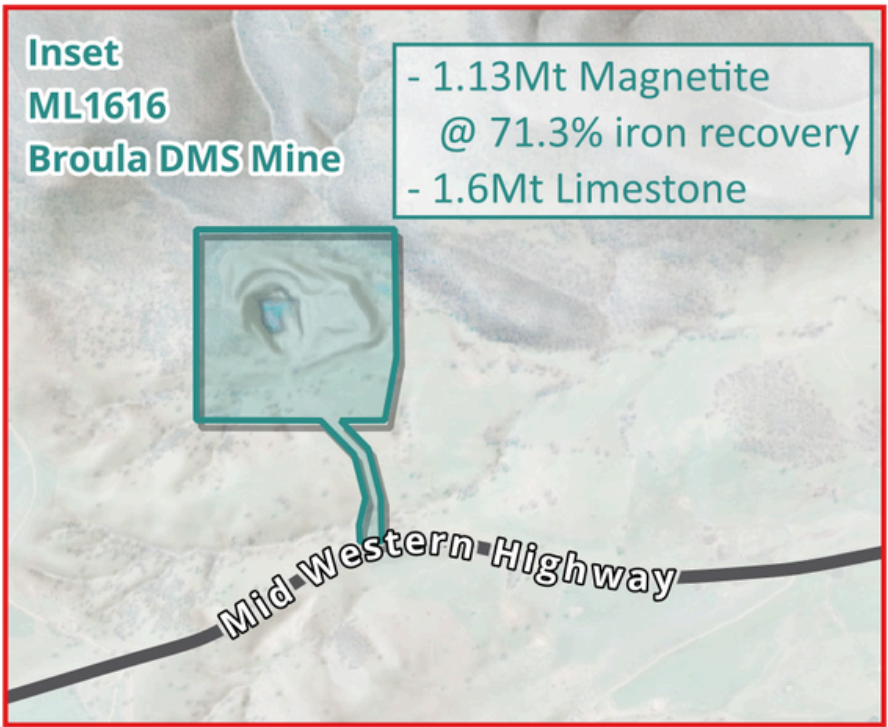


# BROULA MINE



## ML1616

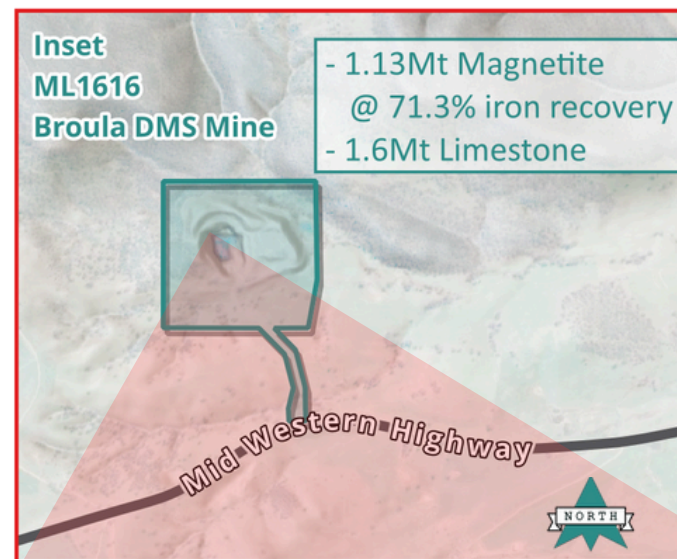
Area	Start Date	Expiry Date
33 Hectares	31/03/2008	31/03/2029



Excellent access to key coal basins, infrastructure and end-users.



# BROULA MINE

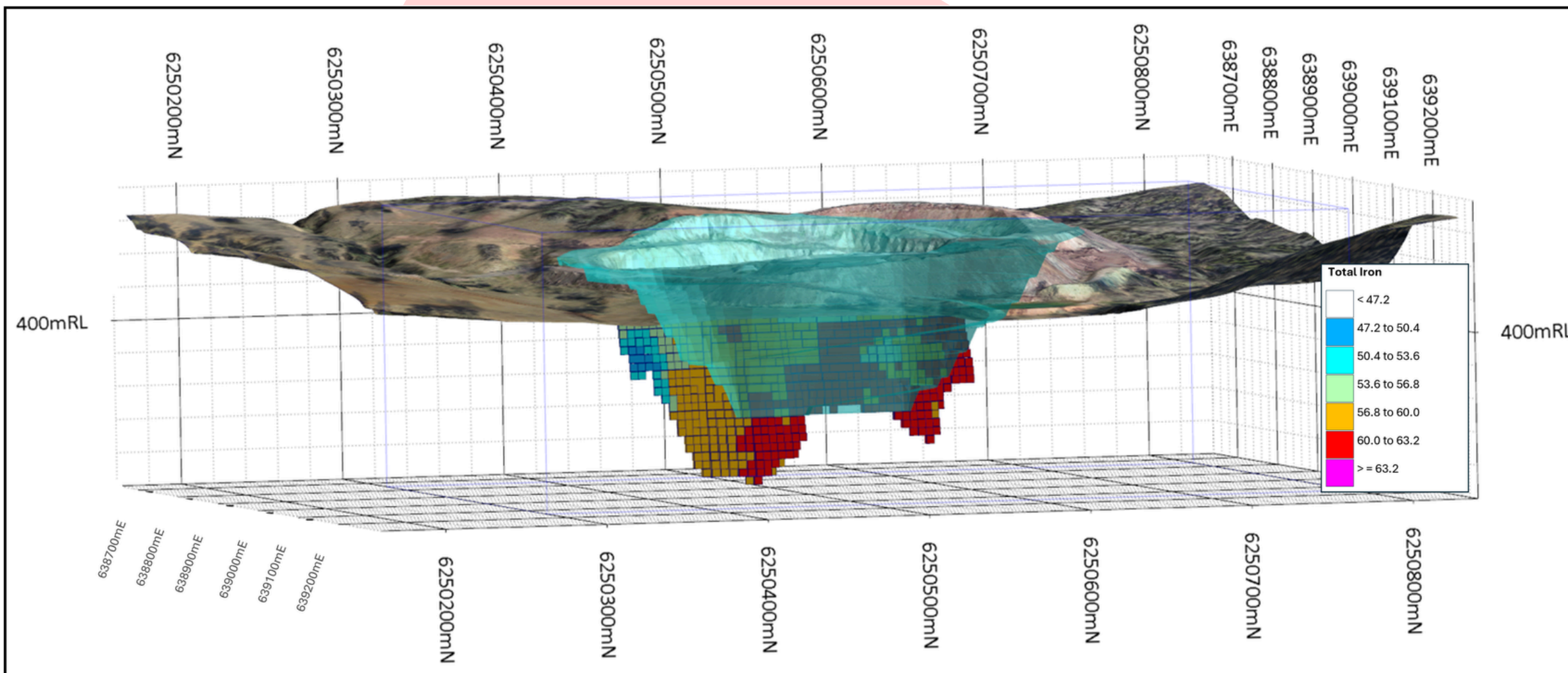


## ML1616

**JORC-Compliant Mineral Resource**  
**1.13Mt magnetite @ 71.3% iron recovery** and **1.6Mt limestone** (96% Measured & Indicated), primarily associated with a massive magnetite skarn. Mineralisation is open at depth and along strike, offering clear resource and growth potential.

**Permitted Production Capacity**  
Of up to 170,000tpa.

**Key Environmental, Land Access and Development Approvals in Place**  
Enabling an efficient restart pathway and clear route to recommencement of mining operations.













# BROULA MINE





# BROULA MINE





## Strategically Positioned. Competitively Unmatched.

Secure a unique investment opportunity as one of the **only** mainland Australian DMS suppliers to coal washeries.

More information is available on request

---

### FIND OUT MORE



[amets.com.au/investment-opportunities](https://amets.com.au/investment-opportunities)

OR



[info@amets.com.au](mailto:info@amets.com.au)

**SALE  
OPPORTUNITY**



**BROULA PROJECT**

**NEW SOUTH WALES**

**AMETS**  
TENEMENTS & GEOSERVICES