

# OUR SERVICES



## HELPING YOU GET ON THE GROUND AND STAY ON THE GROUND

Internationally and Australia Wide

NSW | NT | QLD | SA | TAS | VIC | WA | PNG

At **AMETS Tenements & Geoservices**, we free you up to focus on your projects.

Our services are flexible, and can be tailored to your suit your project needs or business requirements.

As the trusted leaders in mining compliance, you can be sure that your project is in safe hands.

**Contact us** to find out more about how we can support you or your business, and to obtain an obligation free quote.

---

### TRUSTED LEADERS IN MINING COMPLIANCE



[AMETS.COM.AU](https://www.amets.com.au)



PO BOX 563, EAST MAITLAND NSW 2323



[INFO@AMETS.COM.AU](mailto:info@amets.com.au)

AUSTRALIAN MINING & EXPLORATION TITLE SERVICES PTY LTD

ABN 30 140 504 098

## OUR SERVICES INCLUDE

### TENEMENTS

-  Tenement Management
-  Monitoring & Acquisition
-  Land Access & Stakeholder Engagement
-  Safety / Risk Management Systems
-  Due Diligence
-  Native Title & Cultural Heritage
-  Admin Support Services
-  Stakeholder Agreement Management

### GEOSERVICES

-  Technical Reporting
-  GIS Mapping
-  Approvals (APO, Work Plans, Environmental (Mining) Licensing, PEPR, PoW's)
-  Environmental Compliance
-  Tenure & Historical Data Reviews
-  Data Room Management
-  Project Marketing
-  Data Management

## TENEMENTS

### TENEMENT MANAGEMENT

Our **Tenement Management Package** includes:

-  Hosting and maintenance of your tenement particulars within our secure proprietary database
-  A regular action and tenement status report advising of upcoming obligations to assist you with your budget and operational timeline
-  A monthly meeting to review your tenement portfolio, obligations and advice on project and tenement amalgamation opportunities
-  Updated tenement register provision on request
-  Rates, fees and notices for government and environmental bodies
-  Preparation and lodgement of tenement variations to expenditure and exploration activity covenants, Form 5 (WA), partial reductions (including preparation of associated maps), and full relinquishments
-  Management of Environmental Authority, Health and Safety and Royalty Returns
-  Review and lodgement of statutory technical reports
-  Regular access to state-specific moratorium maps
-  Administration of all tenement related correspondence including Notice of Entry
-  Regular auditing of obligation dates, statutory requirements, and tenement boundaries on government databases
-  Government department liaison
-  Advice and interpretation on mining, extractive and exploration legislation
-  Priority notifications on AMETS news and updates which may include industry relevant updates, changes to state legislation, funding initiatives that AMETS has the advantage of knowing through our extensive industry connections

# TENEMENTS (CONT.)



## TENEMENT MANAGEMENT

Additional Tenement Management Services include:

- ✓ **Advertising**  
NSW and VIC have specific requirements and processes for advertising new applications in both state and local newspapers.
- ✓ **Applications**  
Preparation of applications which can include drafting maps, work programs, environmental and community consultation programs, lodging all documentation and liaising with government departments.
- ✓ **Dealings (including joint ventures)**  
AMETS can take care of all matters relating to dealings, including but not limited to caveats, the registration of joint venture agreements and the registration of agreements.
- ✓ **Objections**  
Dealing with objections to applications received from landowners or the public.
- ✓ **Planning Permits**  
Preparation, lodging and amendments to planning permits.
- ✓ **Renewals**  
Includes preparation and lodgement of renewal applications with the assistance of supporting documentation from the client.
- ✓ **Transfers**  
AMETS can liaise with all parties and Government departments to ensure the transfer processes smoothly until completion.



## MONITORING & ACQUISITION

- ✓ **Moratorium Mapping**  
Weekly, fortnightly and monthly maps of available or soon-to-be available ground in each state and territory.
- ✓ **Monitoring Mapping**  
Our team of Geologists can produce highly detailed and specific maps allowing you to monitor ground you are interested in.



## LAND ACCESS & STAKEHOLDER ENGAGEMENT

- ✓ Our team can save you time and money by assisting you to effectively engage with landowners and the broader community, ensuring that your project has the best chance of succeeding. Our best practice, value for money Land Access and Community Engagement solutions are tailored to suit your project needs and internal requirements.



## SAFETY & RISK MANAGEMENT SYSTEMS

- ✓ AMETS Safety & Risk Management Systems are designed to help you proactively identify, assess and mitigate potential hazards and risks in your operations. Our experienced team can provide you with the framework to conduct thorough risk assessments, develop customised safety plans and provide ongoing support to address emerging risks. Our systems can minimise the likelihood of costly incidents and disruptions, and ultimately contribute to a more secure and efficient work environment.

# TENEMENTS (CONT.)



## DUE DILIGENCE



AMETS can provide a range of Due Diligence Reports from simple status reports of tenements to more complex reports required for acquisitions and Prospectus'. Our more complex reports identify current and future liabilities, native title affected land, landowner agreements, planned and overlapping renewables projects and possible long-term issues. AMETS Due Diligence Reports are an indispensable tool to assist with strategic decision making and to mitigate risk and potential liabilities.



## NATIVE TITLE & CULTURAL HERITAGE



Our experienced team can help you stay up to date with your native title and cultural heritage obligations, Australia wide. All matters relating to native title, including compensation, department correspondence and liaising with affected parties. AMETS can assist you to navigate the ever-changing obligations and reduce your risk of non-compliance.



## ADMIN SUPPORT SERVICES



Our Admin Support Services provide comprehensive administration assistance to streamline your business operations, ensuring efficiency and allowing you to focus on your core activities. Services include assistance with grant or funding applications, drafting of department required documentation, data entry and data management. Our Admin Support Services are flexible and can be tailored to suit your requirements.



## STAKEHOLDER AGREEMENT MANAGEMENT



AMETS offers a range of solutions to manage your obligations under a range of Stakeholder Agreements. These may include assisting you to managing landholder agreements, agreements relating to overlapping tenure and shadow management of agreements. We can assist with Compliance Monitoring (ensuring parties adhered to the terms of the agreement), Performance Tracking (monitoring the progress of agreements to ensure milestones are met) and Communication Management (keeping stakeholders informed and engaged through regular updates and meetings).

---

# GEOSERVICES



## TECHNICAL REPORTING

### Technical Reporting



AMETS assists with preparing and lodging annual statutory reports, ensuring compliance with state-specific guidelines. We provide clients with regular schedules for report due dates and notify them of any changes to prescribed guidelines across all Australian states.

### Rehabilitation Reports



Our services include the preparation and lodgement of necessary documentation related to the rehabilitation of ground disturbances. We ensure that all activities comply with environmental regulations, promoting sustainable practices across various jurisdictions.

### Regional Project Assessment



We offer comprehensive assessments of open file data, tenement status, regional development plans, and cultural, social, and environmental constraints. These reports are tailored to client-nominated areas, providing valuable insights for strategic planning and decision-making.

### Compliance and Advisory



We ensure adherence to tenure obligations, including applications, renewals, and surrenders, across all states. Our expert advisory services help clients navigate legislative requirements, ensuring efficient and compliant tenement management.

# GEOSERVICES (CONT.)



## GIS MAPPING



### GIS Mapping and Visualisation

AMETS offers comprehensive GIS Mapping services that enable clients to visualise spatial data effectively. Our dynamic maps integrate tenements, work programs, planned or overlapping renewables projects, and regional features, providing crucial insights for informed decision-making and optimised resource management.



### Compliance and Risk Management

Our GIS mapping services ensure and enhance compliance with land regulations, identifying critical information related to native title, environmental restrictions and planned or overlapping renewables projects. This proactive approach helps mitigate risks, preventing costly legal penalties and project delays.



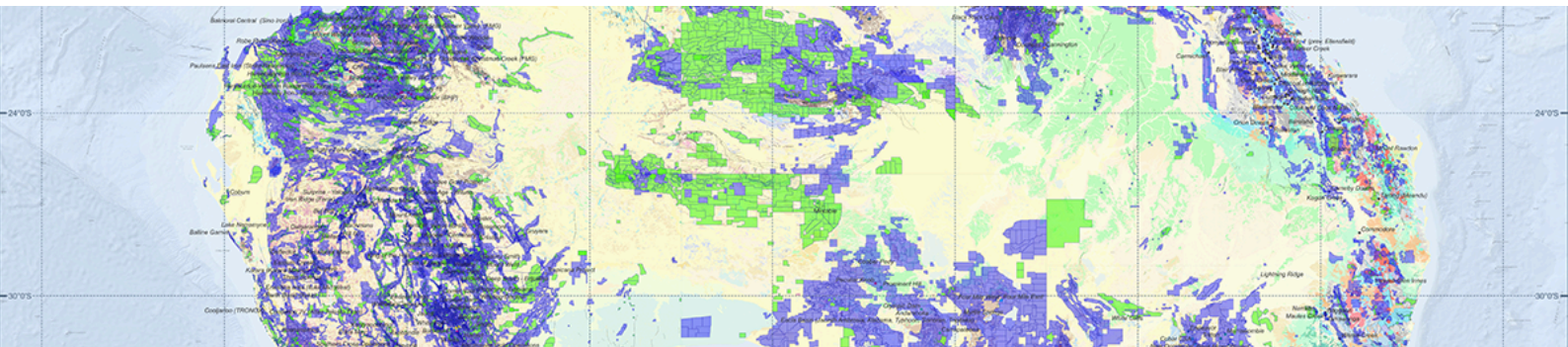
### Data Integration & Analysis

We specialise in gathering and integrating both spatial and non-spatial information into our GIS platform. This enables our team to perform comprehensive and meaningful detailed geospatial analysis, producing visual representations such as cross-sections and heat maps that reveal patterns and trends essential for strategic planning.



### Strategic Opportunity Identification

Through GIS mapping, we uncover valuable insights about neighbouring properties and infrastructure. This information aids clients in identifying strategic opportunities for expansion, collaboration, and effective project execution, enhancing overall competitiveness in the market.



## APPROVALS

(APO, ENVIRONMENTAL (MINING) LICENCES, PEPR, PoW's, WORK PLANS ETC.)



### Works Approvals

This includes the preparation and lodgement of all documents relating to approvals for mining and exploration work, including drilling activity.



### Work Plans, Code of Practice & Low Impact Exploration

Our team develops comprehensive Work Plans for exploration, small scale mining, and extractive activities, including quality maps, community engagement plans and rehabilitation plans. We also prepare exploration proposals assessed against the Low Impact Exploration criteria and submit notifications to relevant parties. AMETS also facilitate the Code of Practice process for Low-Risk Mines or Small Quarries, including planning permits.



### Assessable Prospecting Operation (APO)

We assist in preparing and submitting APO applications for exploration activities, including those that do not comply with CEA criteria, ensuring all required details and supplementary forms (REF, AIS etc.) are submitted.



### Environmental (Mining) Licence

We create and update Environmental (Mining) Licence applications (formerly Mining Management Plans - MMP), outlining operational conduct, environmental impact management, and safety measures. Our comprehensive approach ensures compliance with current regulatory requirements, community expectations, and the new environmental protection framework in the Northern Territory. We also assist with updating existing MMP approvals to Environmental (Mining) Licences.



### Program for Environment Protection and Rehabilitation (PEPR)

For South Australian operations, we prepare detailed PEPRs for 12-month and ongoing approval which describe mining operations, environmental protection strategies, and rehabilitation plans in accordance with state-specific requirements.

# GEOSERVICES (CONT.)



## ENVIRONMENTAL COMPLIANCE



### Conditions of Approval reviews & Gap Analysis

We conduct detailed reviews of project Conditions of Approval across all jurisdictions to ensure your operations remain compliant. Our team identifies gaps between approved conditions and on-ground activities, providing clear, practical recommendations to mitigate risk. This proactive approach helps prevent non-compliance, enforcement action and costly project delays.



### Drafting and regulatory submission of Environmental Management Plans

AMETS prepares comprehensive Environmental Management Plans (EMPs) tailored to your project activities and regulatory requirements. We ensure plans address operational impacts, environmental controls, monitoring commitments and rehabilitation obligations. Our team manages the preparation, review and submission process, liaising directly with regulators to streamline approvals.



### Simple and effective sampling and monitoring programs

We design practical, risk-based sampling and monitoring programs that meet regulatory obligations without creating unnecessary complexity. Whether relating to water, dust, noise, soil or rehabilitation performance, our programs provide clear methodologies, reporting frameworks and compliance documentation to satisfy approval conditions and environmental authorities.



### Environmental incident reporting tools

AMETS develops clear and user-friendly environmental incident reporting tools to support immediate response and regulatory compliance. We assist in establishing reporting workflows, documentation templates and escalation procedures aligned with statutory requirements. This ensures incidents are recorded, managed and reported accurately and within required timeframes.



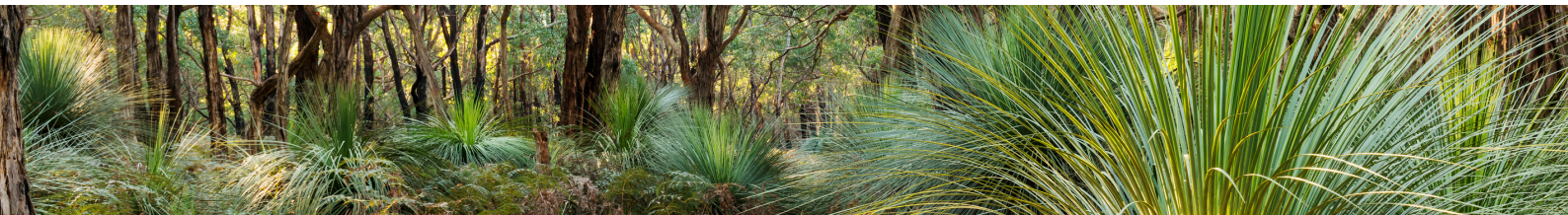
### Whole-of-project compliance tracking

Our compliance tracking systems provide a structured framework to monitor environmental obligations across the lifecycle of your project. We map approval conditions, reporting deadlines, monitoring commitments and rehabilitation milestones into a clear tracking register, reducing the risk of missed obligations and strengthening governance oversight.



### Environmental audits and internal compliance reviews

We conduct independent environmental audits and internal compliance reviews to assess performance against approval conditions, legislation and company policies. Our structured review process identifies areas for improvement, strengthens systems and supports continuous improvement, giving management confidence that environmental obligations are being effectively managed. Our services also include preparation of Annual Environmental Reports (AER's).



## TENURE & HISTORICAL DATA REVIEWS



### Environmental and Planning Review

Our expert team conducts thorough assessments of environmental and planning sensitivities, identifying key factors such as strategic agricultural land, biodiversity areas, and relevant planning restrictions. This proactive approach ensures compliance and mitigates potential risks during exploration activities.



### Land Tenure Evaluation

We specialise in evaluating land tenure, identifying Freehold, Crown, and Government-owned parcels. Our services include assessing overlapping and planned renewables projects, facilitating Land Access Arrangements and title searches, to ensure that clients have the necessary permissions and information to proceed with exploration confidently.



### Native Title and Cultural Heritage

AMETS is committed to upholding Indigenous rights by conducting detailed native title and cultural heritage reviews. We identify local Aboriginal Land Councils and cultural heritage sites, providing clients with essential guidance to navigate regulatory requirements and foster respectful engagement with Indigenous communities.



### Reserve and Forest Assessment

Our tenure review includes a comprehensive assessment of protected areas, such as Nature Reserves and State Forests. We assist clients in obtaining access permits and navigating the necessary protocols, ensuring smooth exploration operations while adhering to environmental regulations.

# GEOSERVICES (CONT.)



## TENURE & HISTORICAL DATA REVIEWS (CONT.)



### Historical Data Extraction

Skilled in extracting data from legacy systems and historical records, preserving valuable information for analysis and compliance.



### Data Transformation & Integration

Expertise in transforming historical data to align with current operational needs, integrating seamlessly with modern data management systems.



### Compliance & Validation

Ensuring all historical data reviews meet legislative and regulatory requirements, providing clients with confidence in their data management practices.



### Data Cleaning and Quality Assurance

Comprehensive cleaning and validation processes to rectify inaccuracies and ensure the reliability of historical datasets.



### Historical Map Georeferencing

Georeference maps from historical reports for integration into exploration interpretations.



## DATA ROOM MANAGEMENT



### Secure Data Management

Advanced security features to protect sensitive data, ensuring compliance with industry standards and regulations.



### Efficient Organisation

Structured data management that facilitates easy access and retrieval of documents, enhancing operational efficiency.



### Compliance and Transparency

Ensuring all data room activities meet regulatory requirements, fostering trust and accountability.



### Collaboration and Communication

Tools and features that support seamless collaboration and communication among stakeholders.



## PROJECT MARKETING



### Development of Marketing Collateral

AMETS can assist with the development and promotion of advertisements and marketing materials for Australian and International Projects. Whether you are looking to sell a project, buy an asset or seek joint venture partners, we can assist with imagery, 2D maps, data and text for static and video advertisements, corporate investor or technical presentations, and share market announcements.



### Advertise and Market your Project to our Audience

Market and advertise your Projects digitally through our website, media channels and to our client base. Leverage off AMETS' broad national and international industry wide connections and enhance your campaign's potential for success.



## DATA MANAGEMENT



### Data Compliance

We understand the importance of regulatory compliance. Our data management solutions are designed to meet industry standards and legal requirements, safeguarding our clients' data integrity and security.



### Data Cleaning & Quality Assurance

We provide comprehensive data cleaning services to eliminate inaccuracies and inconsistencies. Our quality assurance processes ensure that our clients' datasets are complete, accurate, and ready for analysis.



### Geospatial Data Management

Specialised in managing spatial datasets, we offer services in data conversion, georeferencing, and spatial analysis to support geological and tenement management needs.



### ETL Processes

Our team excels in using extract, transform, and load (ETL) processes that ensure seamless data integration from diverse sources. We use advanced tools and technologies to extract, transform, and load data efficiently, ensuring that our clients have access to accurate and timely information.

# AMETS

TENEMENTS & GEOSERVICES

HELPING YOU GET ON THE GROUND  
AND STAY ON THE GROUND

Australia Wide & Internationally



---

OUR TEAM OF EXPERIENCED  
TENEMENT MANAGERS & GEOLOGISTS  
ARE READY TO HELP STREAMLINE YOUR  
COMPLIANCE NEEDS

---

FIND OUT MORE  
CONTACT OUR TEAM



AMETS.COM.AU



INFO@AMETS.COM.AU



PO BOX 563  
EAST MAITLAND NSW 2323

